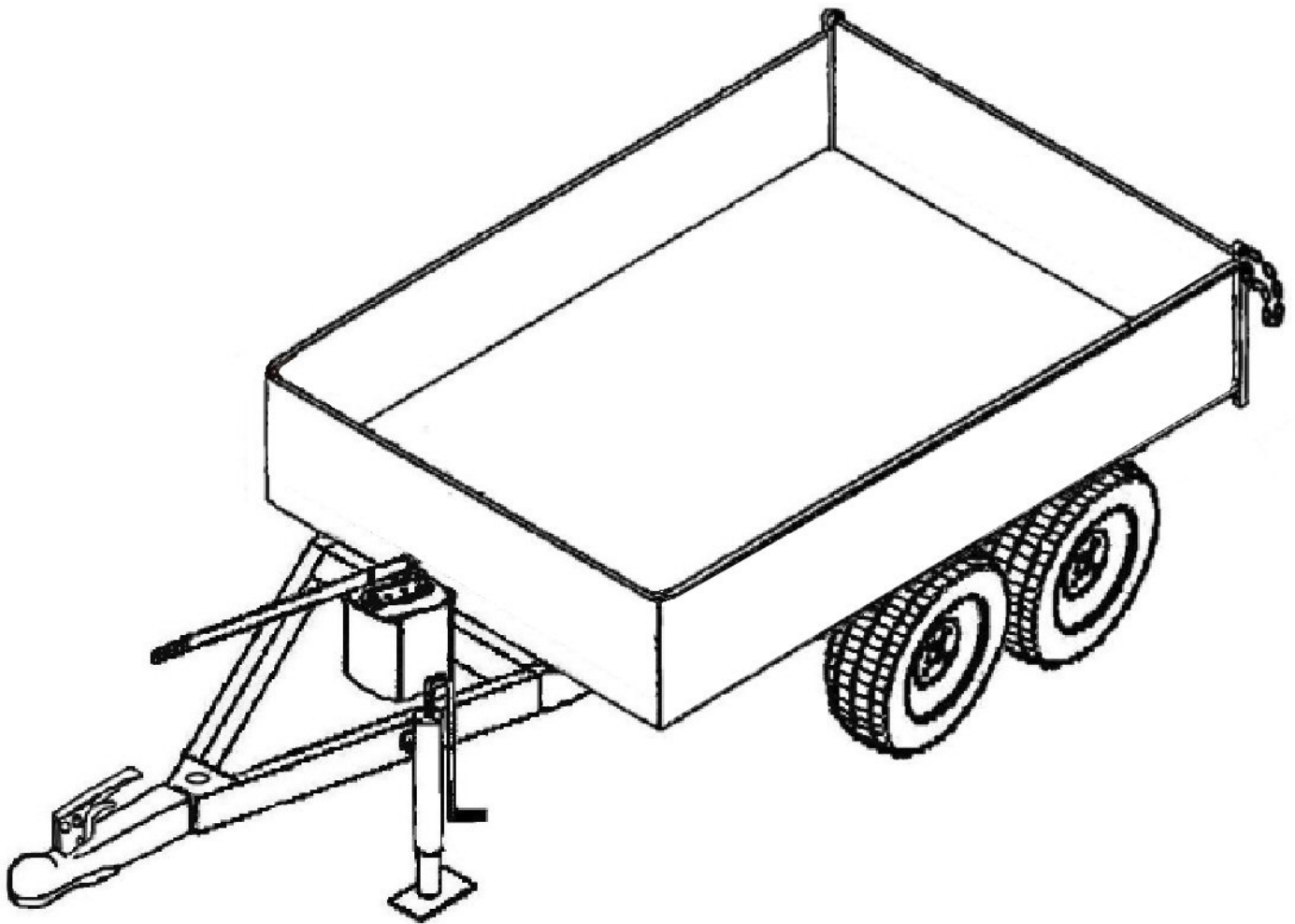




Taylor Pittsburgh Mfg., Inc.  
PO Box 1200  
Winfield, Alabama 35594  
205-487-3202

# 1.5 TON DUMP TRAILER



## OWNERS MANUAL

FORM 4000-1.5T-DT-SC  
OCTOBER 2023

# CONTENTS

ITEM	PAGE
WARRANTY .....	2
SAFETY SYMBOLS & SIGNAL WORDS .....	3
GENERAL INFORMATION .....	4
BOLT TORQUE CHART .....	4
SPECIFICATIONS .....	5
SPECIFICATIONS .....	6
SAFETY RULES .....	7-8
SAFETY DECALS & LOCATIONS .....	9-11
OPERATION .....	12
TRANSPORTING, MAINTENANCE, & STORAGE .....	12
OPERATION, ASSEMBLY, & ATTACHING .....	13
NOTES .....	14

## COMPONENT PARTS SECTION

1-1/2 TON COMPONENTS .....	15-16
1-1/2 TON WHEEL COMPONENTS .....	17
MANUAL HYDRAULIC PUMP COMPONENTS .....	18
1-1/2 TON HYDRAULIC CYLINDER COMPONENTS .....	19

## **TO THE DEALER:**

The farm trailer assembly and proper installation to the tractor is the responsibility of the TAYLOR PITTSBURGH dealer. Read manual instructions and safety rules. Make sure all items on the Pre-delivery and Delivery Checklists are completed before releasing equipment to the owner.

## **TO THE OWNER:**

Read this manual before operating your TAYLOR PITTSBURGH farm trailer . The information presented will prepare you to do a better and safer job. Keep this manual handy for ready reference. Require all operators to read this manual carefully and become acquainted with all the adjustment and operating procedures before attempting to operate. Replacement manuals can be obtained from your dealer or by calling 1-205-487-3202, in the USA and Canada only.

The farm trailer you have purchased has been carefully engineered and manufactured to provide dependable and satisfactory use. Like all mechanical products, it will require cleaning and upkeep. Lubricate the unit as specified. Observe all safety information in this manual and safety decals on the farm trailer and tractor.

For service your authorized TAYLOR dealer has trained mechanics, genuine TAYLOR PITTSBURGH service parts, and the necessary tools and equipment to handle all your needs.

Provide your model number and serial number to your dealer to obtain correct repair parts.

### **LIMITED WARRANTY**

TAYLOR PITTSBURGH MFG., INC. the manufacturer, warrants only to the Original Purchaser that this equipment, under normal use and service, will be free from defects in material and workmanship for one (1) year from date of purchase providing this equipment is purchased for individual and not for commercial use. Warranty for commercial usage is 90 days. This warranty does not apply to any equipment which has been damaged or which has been subjected to abuse, misuse, negligence, abnormal wear and tear, alterations, tampering, or failure to follow operating instructions. This warranty does not cover any product or parts not manufactured by TAYLOR PITTSBURGH MFG., Inc.

Under this warranty, the manufacturer will repair or replace any part which the manufacturer determines has failed during the period of the warranty due to defects in material or workmanship. After approval by the manufacturer, the equipment or defective part must be returned to TAYLOR PITTSBURGH MFG., INC., Winfield, AL 35594.

Warranty coverage and performance is expressly conditioned on the return of the completed registration form to TAYLOR PITTSBURGH MFG., INC., Winfield, AL 35594.

PURCHASER'S EXCLUSIVE REMEDY FOR BREACH OF WARRANTY, OTHER DEFECT, OR CONDUCT GIVING RISE TO LIABILITY SHALL BE THE REPAIR OR REPLACEMENT OF THE PRODUCT SOLD, AND THE MANUFACTURER UNDER NO CIRCUMSTANCES SHALL BE LIABLE FOR ECONOMIC LOSS OR INCIDENTAL OR CONSEQUENTIAL DAMAGES. THE MANUFACTURER DISCLAIMS ALL IMPLIED WARRANTIES, INCLUDING THE WARRANTY OF MERCHANTABILITY AND FITNESS FOR PURPOSE.

Taylor Pittsburgh Mfg., Inc. reserves the right to make improvements and changes in specifications without notice or obligation to modify previous sold units.

This manual describes the proper assembly procedures for your sub - compact mower and furnishes operating and maintenance recommendations to help you obtain long and satisfactory service.

# SAFETY

READ AND FOLLOW THE INSTRUCTIONS IN THIS MANUAL AND ESPECIALLY IN THE SAFETY SECTION. FAILURE TO DO SO CAN RESULT IN SERIOUS INJURY OR DEATH.

TAKE NOTE! THIS SAFETY ALERT SYMBOL FOUND THROUGHOUT THIS MANUAL IS USED TO CALL YOUR ATTENTION TO INSTRUCTIONS INVOLVING YOUR PERSONAL SAFETY AND THE SAFETY OF OTHERS.



THIS SYMBOL MEANS  
**ATTENTION!**  
**BECOME ALERT!**  
YOUR SAFETY IS INVOLVED



## SIGNAL WORDS:

The signal words **DANGER**, **WARNING** and **CAUTION** are used with the safety messages in this manual and with each safety signs. They are defined as follows:

**DANGER:** Indicates an immediate hazardous situation that, if not avoided, could result in serious injury or death. This signal word is to be limited to the most extreme situations typically for machine components that, for functional purposes, cannot be guarded.

**WARNING:** Indicates a potentially hazardous situation that, if not avoided, could result in serious injury or death, and includes hazards that are exposed when guards are removed. It may also be used to alert against unsafe practices.

**CAUTION:** Indicates a potentially hazardous situation that, if not avoided, may result in minor or moderate injury. It may also be used to alert against unsafe practice.

If you have any questions not answered in this manual or require additional copies or the manual is damaged, please contact your dealer or Taylor Pittsburgh Mfg., Inc. P.O. Box 1200 Winfield, AL 35594 (205) 487-3202 or [www.taylorpittsburgh.com](http://www.taylorpittsburgh.com)

# GENERAL INFORMATION

## INTRODUCTION

**READ THIS MANUAL** carefully to learn how to properly operate and service your dump trailer correctly. Failure to do so could result in personal injury or equipment damage.

Throughout this manual, references are made to right and left directions. **RIGHT-HAND AND LEFT-HAND** sides are determined by standing behind the dump trailer facing the direction the dump trailer will travel when going forward.

The purpose of this manual is to assist you in operating and maintaining your Series 4000 Dump Trailer. Read it carefully. It furnishes information and instructions that will help you achieve years of dependable performance. These instructions have been compiled from extensive field experience and engineering data. Some of the information may be general in nature due to unknown and varying operating conditions.

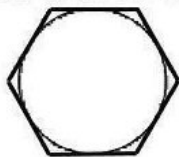
However, through experience and these instructions, you should be able to develop procedures suitable to your particular situation. Maintain your dump trailer with original repair parts to insure optimum performance.

The illustrations and data used in this manual were current at the time of printing, but due to possible production changes, your trailer may vary slightly in detail. We reserve the right to redesign and change the machines as may be necessary without notification.

This trailer is for **off-highway uses only**. Do not use this trailer on highways.

## BOLT TORQUE CHART

**GRADE 2**



**GRADE 5**



**GRADE 8**



## TORQUE IN FOOT POUNDS (NEWTON METERS)

BOLT SIZE		3/8"	1/2"	5/8"	3/4"	7/8"	1"
HEX HEAD		9/16"	3/4"	15/16"	1-1/8"	1-5/16"	1-1/2"
GRADE	2	18 (24.4)	45 (61.0)	89 (120.7)	160 (216.9)	252 (341.6)	320 (433.9)
	5	30 (40.6)	68 (92.2)	140 (189.8)	240 (325.4)	360 (488.1)	544 (737.5)
	8	40 (54.2)	100 (135.6)	196 (265.7)	340 (460.9)	528 (715.1)	792 (1073.8)

<b>DUMP TRAILER SPECIFICATIONS</b>	
<b>MODEL</b>	<b>1.5T-50 X 72</b>
Capacity - Ton	1-1/2
Capacity	35 cu ft
Dump	Rear
Hitch	Swivel
Axle	Tandem
Tire Size	18 x 8-1/2 x 8
No. of Tires	4
Weight - lbs.	600
Bed Width - Inches	50
Bed Length - Inches	70
Bed Height - Inches	21
Bed Floor	12 Gauge
Overall Width - Inches	54
Overall Length - Inches	8' 6"
Overall Height - Inches	34
Dump Angle	45°
Side Panel Height - Inches	13
Rear Panel Height - Inches	14
Front Panel Height - Inches	13
Tongue Jack	Standard

## EQUIPMENT SAFETY GUIDELINES

- I Safety of the operator and bystanders is one of the main concerns in designing and developing a dump trailer. However, every year accidents occur which could have been avoided by a few seconds of thought and a more careful approach to handling equipment. You, the operator, can avoid many accidents by observing the following precautions and insist those working with you, or for you, follow them.
- I In order to provide a better view, certain photographs or illustrations in this manual may show an assembly with a safety shield removed. However, equipment should never be operated in this condition. Keep all shields in place. If shield removal becomes necessary for repairs, replace the shield prior to use.
- I Replace any safety sign that is not readable or is missing. An example of such safety signs is shown in this manual.
- I Never use alcoholic beverages or drugs that can hinder alertness or coordination while operating this equipment. Consult your doctor about operating this machine while taking prescription medications.
- I **Under no circumstances should children under the age of 18 be allowed to work with this equipment. Do not allow persons to operate or assemble this unit until they have read this manual and have developed a thorough understanding of the safety precautions and of how it works. Review the safety instructions with all users annually.**
- I This equipment is dangerous to children and persons unfamiliar with its operation. The operator should be a responsible, properly trained and physically able person familiar with farm machinery and trained in this equipment's operations. If the elderly are assisting with farm work, their physical limitations need to be recognized and accommodated.
- I Use a tractor equipped with a Roll Over Protective System and seat belts. (ROPS)
- I Never exceed the limits of a piece of machinery. If its ability to do a job, or to do so safely, is in question- **DON'T TRY IT.**
- I Do not modify the equipment in any way. Unauthorized modification could result in serious injury or death and may impair the function and life of the equipment.
- I In addition to the design and the confirmation of this implement, including safety signs and safety equipment, hazard control and accident prevention are dependent upon the awareness, concern, prudence, and proper training of personnel involved in the operation, transport, maintenance, and storage of the machine. Refer also to safety messages and operation instruction in each of the appropriate sections of the tractor and dump trailer manuals. Pay close attention to the safety signs affixed to the tractor and the dump trailer.



## SAFETY RULES

### ATTENTION! BECOME ALERT! YOUR SAFETY IS INVOLVED!



- Your personal safety is a primary concern in the design and manufacture of our products. Unfortunately, our efforts to provide safe equipment can be wiped out by a single careless act of an operator or bystander.
- In addition to the design and configuration of equipment, hazard control and accident prevention are dependent upon the awareness, concern, prudence and proper training of personnel involved in the operation, transport, maintenance and storage of this equipment.
- It has been said, “**The best safety device is an informed, careful operator.**” We ask you to be that kind of operator.
- The design of this equipment depends on it being operated within the limitations as explained in this manual.
- Ensure equipment is properly mounted, adjusted and in good operating condition.
- Tighten all bolts and nuts and check that all cotter pins are installed securely to ensure equipment is properly assembled before operating.
- Tractor must be equipped with an approved Roll-Over-Protective System (ROPS). Keep seat belt securely fastened. Falling off the tractor can result in serious injury or even death. Keep foldable ROPS systems in “locked up” position at all times.
- A minimum 20% of the combined tractor and equipment weight must be on the tractors front wheels with the equipment in transport position. Without this weight, tractor could tip over causing personal injury or death. See your tractors operators manual for information regarding adding weights.
- Remove accumulated debris from this equipment, tractor, and engine to avoid fire hazard.

#### TRAINING

- Safety instructions are important! Read this manual and the tractor manual; follow all safety rules and safety decal information. (Replacement manuals are available from your dealer). Failure to follow instructions or safety rules can result in serious injury or death.
- If you do not understand any part of this manual and need assistance see your dealer.
- Know your controls and how to stop engine and attachment quickly in an emergency.
- The operator must be instructed in and be capable of the proper operation of the equipment it's attachments and all controls. Do not allow anyone to operate this equipment without proper instructions.
- Do not allow children or untrained persons to operate equipment.
- Ensure all safety decals are installed. Replace if damaged. (See Safety decals section for location.)

#### OPERATIONAL SAFETY

- Operate only in daylight or good artificial light.
- Always comply with all state and local lighting and marking requirements.
- No riders on equipment.
- Always sit in tractor seat with seat belt fastened when operating controls or starting engine. Place transmission in park or neutral, engage brake and ensure all other controls are disengaged before starting tractor engine.
- Look down and to the rear and make sure area is clear before operating in reverse.
- Do not operate on steep slopes.
- Do not stop, start or change directions suddenly on slopes.
- Watch for hidden hazards on the terrain during operation.

(Safety Rules continue on next page)

#### PREPARATION

- Always wear close fitting clothing and personal protection equipment called for by the job conditions. These items may include a hard hat, safety glasses, goggles or face shield, hearing protection and safety boots. DO NOT wear loose clothing, jewelry or any other items that may be entangled in moving parts. Tie up long hair.





## SAFETY RULES

### ATTENTION! BECOME ALERT! YOUR SAFETY IS INVOLVED!



(Safety Rules continued from previous page)

- Stop implement and tractor immediately upon striking an obstruction. Turn engine off, remove key, inspect and repair any damage before resuming operation.
- When performing any service or maintenance, disengage power to implement. Lower all raised components to the ground. Operate valve levers to relieve any hydraulic pressure. Shut off the engine, set the parking brakes and remove the ignition keys before dismounting tractor.
- Keep all persons away from operator control area while performing adjustments, service or maintenance.

#### **MAINTAINANCE SAFETY**

- Before working underneath, raise equipment to highest position, install transport locks, and block securely. Blocking up prevents equipment dropping from hydraulic leak down or mechanical failure on the tractor.
- Your dealer can supply genuine replacement parts. Substitute parts may not meet original equipment specifications.
- Do not climb or walk on equipment frame.

#### **TRANSPORTING SAFETY**

- Use a Slow—Moving Vehicle (SMV) emblem and proper lighting on the tractor when transporting the equipment.
- Do not drive the tractor and equipment over 20 mph (30 kph) on the best surface conditions. Reduce speed when going up and down hills and when approaching ditches or corners.
- Always comply with all state and local lighting and marking requirements.
- Check condition of hitch pins and bolts before transporting.
- Keep your equipment in proper working condition. Unauthorized modifications to the equipment may impair the function and affect the equipment life. Do not add excessive weight to the equipment. Additional weight could cause the frame to fail resulting in loss of control of equipment/tractor during transport.

- Raise equipment to highest position for transport.
- Watch low hanging Overhead Power Lines during transport. Avoid contact as this can cause serious injury or death.

#### **STORAGE**

- Store unit on a level surface sheltered from the weather.
- Lower equipment to the ground and block to prevent rolling.
- Clean all debris from equipment.
- Coat soil engaging surfaces with a rust inhibitor after cleaning.
- Keep playing children and bystanders away from storage area.

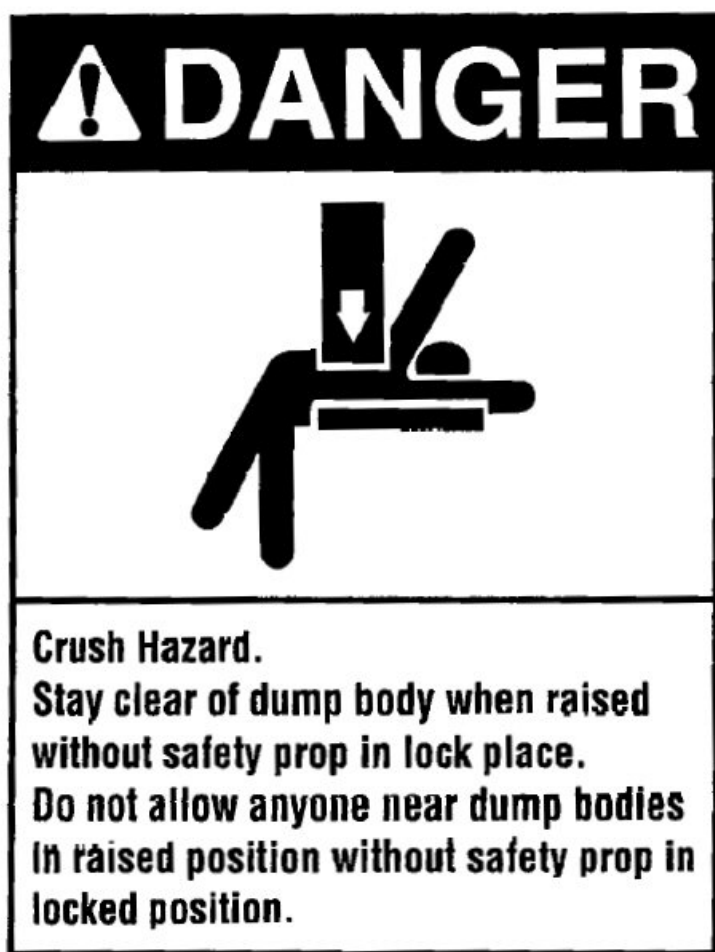


## SAFETY DECALS



**ATTENTION! BECOME ALERT! YOUR SAFETY IS INVOLVED**  
**Replace Immediately If Damaged**

The following safety decals are located on your implement. Read them and follow their instructions. Keep all decals in place and legible. If safety signs have been damaged, removed, become illegible or parts have been replaced without signs, new safety signs must be applied. New safety signs are available from your authorized dealer, distributor or factory.



# **DANGER**



**OVERHEAD OBSTRUCTIONS SUCH AS  
POWER LINES, BRIDGES, TREE LIMBS.  
CAN CAUSE SERIOUS INJURY OR DEATH**

Before moving vehicle make certain PTO is disengaged and  
dump body lowering lever is in down position.

## **CAUTION**

**Off Road Use Only!  
DO NOT Exceed 20 MPH.**

# **WARNING**

## **FAILURE TO OBSERVE THE FOLLOWING COULD RESULT IN AN ACCIDENT, SERIOUS INJURY OR DEATH**

**Only a properly trained operator should operate the  
truck while using the dump body.**

- \* A daily inspection of bolts, welds, hinges and proper fluid level should be checked during the pre-trip and post-trip inspection.
- \* Never raise the dump body on unlevel or soft terrain.
- \* Before raising the dump body, check for overhead obstructions such as powerlines, tree limbs, buildings, etc.
- \* The load on the dump body should always be distributed evenly.
- \* Never raise the dump body in high gusty winds.
- \* Due to weather and/or load material, a load may freeze or stick to dump body.
- \* Never go outside of the vehicle while raising dump body.
- \* Safety lock should be in locked position when dump body is raised for maintenance or servicing.
- \* Never raise a loaded dump body for maintenance or servicing.
- \* Before leaving the truck, always lower the dump body into it's original position.
- \* When moving the truck, make sure the dump body is completely down and pto is in neutral.
- \* Always release the tailgate before raising a loaded dump body.
- \* Always make sure there is no one walking, standing or operating equipment in the area of operation.
- \* Before operating this dump body, the operator needs to read and fully understand the operator's manual.

## **OPERATION**

Your trailer is designed for performing jobs with little or no adjustment requirement.

## **TRANSPORTING**

- 1) Transport at no more than 20 MPH (30 KPH).
- 2) Use care when transporting on rough terrain.
- 3) **DO NOT transport on public roads**, always have a slow moving vehicle (SMV) emblem mounted to the tractor such that it is visible from the rear.

## **MAINTENANCE**



### **WARNING**

**Do not perform any maintenance while tractor is running or when trailer is in motion.**

Your dump trailer is designed for minimum maintenance. By taking a few minutes prior to beginning operations and performing the following maintenance check, you will insure improved performance and longer life of your trailer.

- 1) Check tire pressure.
- 2) Make sure tailgate is shut and latched.

## **STORAGE**

- 1) Clean all debris from trailer.
- 2) Store trailer on a level surface sheltered from the weather. Block to prevent rolling.
- 3) Keep playing children and bystanders away from storage area.

# OPERATION

- Your personal safety is a primary concern in the design and manufacture of our products. Unfortunately, our efforts to provide safe equipment can be wiped out by a single careless act of an operator or bystander.
- In addition to the design and configuration of equipment, hazard control and accident prevention are dependent upon the awareness, concern, prudence and proper training of personnel involved in the operation, transport, maintenance and storage of this equipment.
- It has been said, “ **The best safety device is an informed, careful operator.**” We ask you to be that kind of operator.
- The operator must be properly trained. Operators must be familiar with the equipment and tractor and all safety practices before starting operation. Read the safety information on pages 2, 5-8.
- This dump trailer is designed for normal farm usage.
- Maintain your dump trailer with original repair parts to ensure optimum performance.

## MODIFICATIONS

- It is the policy of the manufacturer to improve its products whenever possible and practical. We reserve the right to make changes, improvements, and modifications at any time without incurring the obligation to make such changes, improvements, and modifications on any implement sold previously.

## ASSEMBLY

### GENERAL

- Your Series 4000 Dump Trailer is shipped fully assembled..

### IMPORTANT

Check trailer tire pressure to ensure adequate weight carrying capability.

## BEFORE OPERATION

- 1) Tighten all loose hardware using the torque chart. SEE ASSEMBLY. Replace any missing hardware. On new machines, all hardware must be rechecked after first few hours of operation.
- 2) Replace any bent or broken parts.
- 3) Check trailer for signs of wear or damage. Replace if necessary. SEE MAINTAINANCE.
- 4) Read the safety section of this manual to be sure of all precautions.

## ATTACHING

- 1) Back tractor to align hitch with drawbar.



### WARNING

**Be sure bystanders are clear. Do not stand between trailer and tractor. Shut off tractor and engage parking brake prior to dismounting.**

- 2) Attach tractor to trailer with high strength drawbar pin. Secure with keeper.
- 3) Attach hydraulic hoses from trailer to tractor remote outlets.

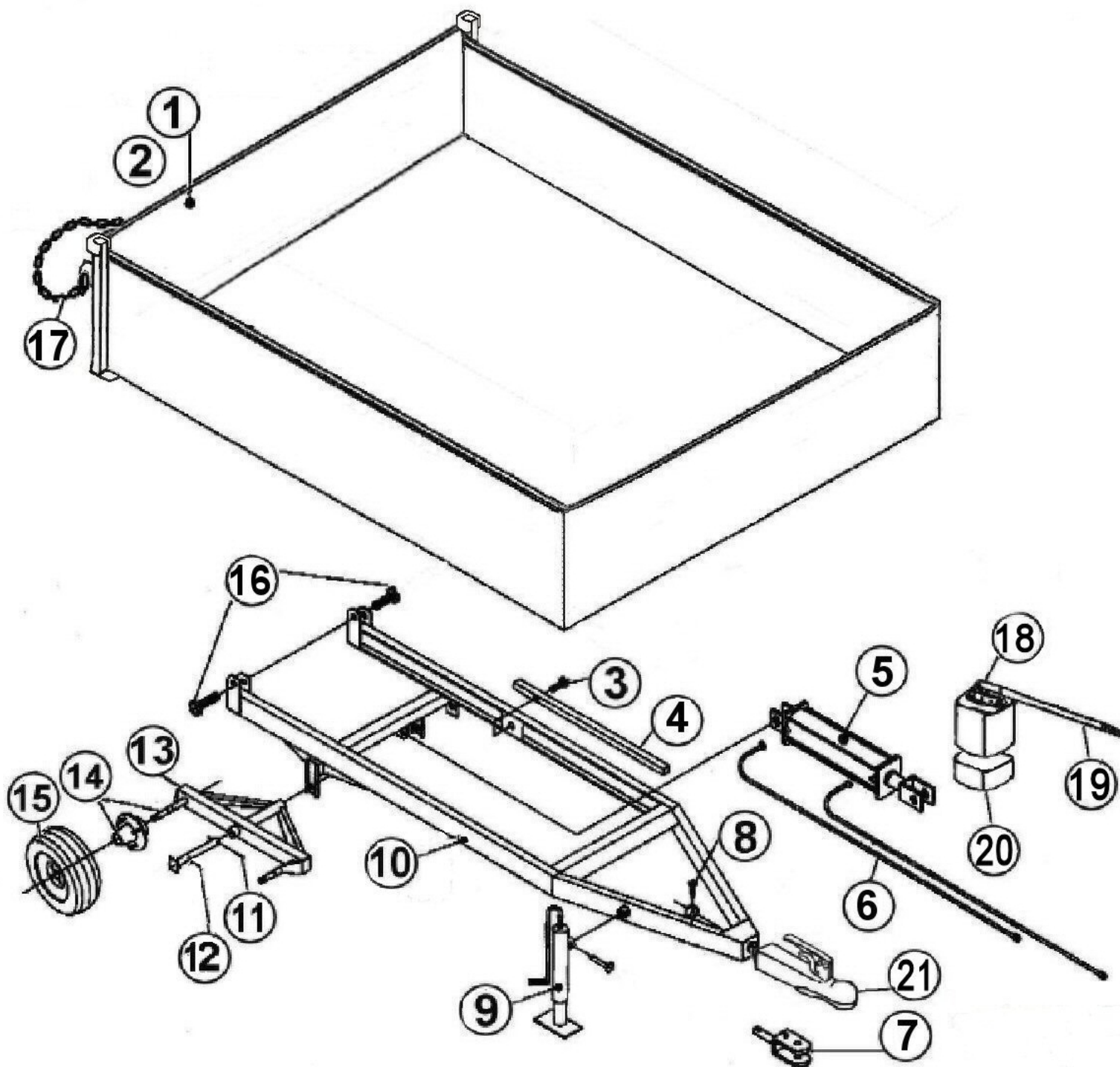


### WARNING

**Do not use bare hand to check for leaks. Hydraulic fluid under high pressure can penetrate skin and cause poisoning.**

## NOTES:

## 4000 - 1.5T - DUMP TRAILER COMPONENTS

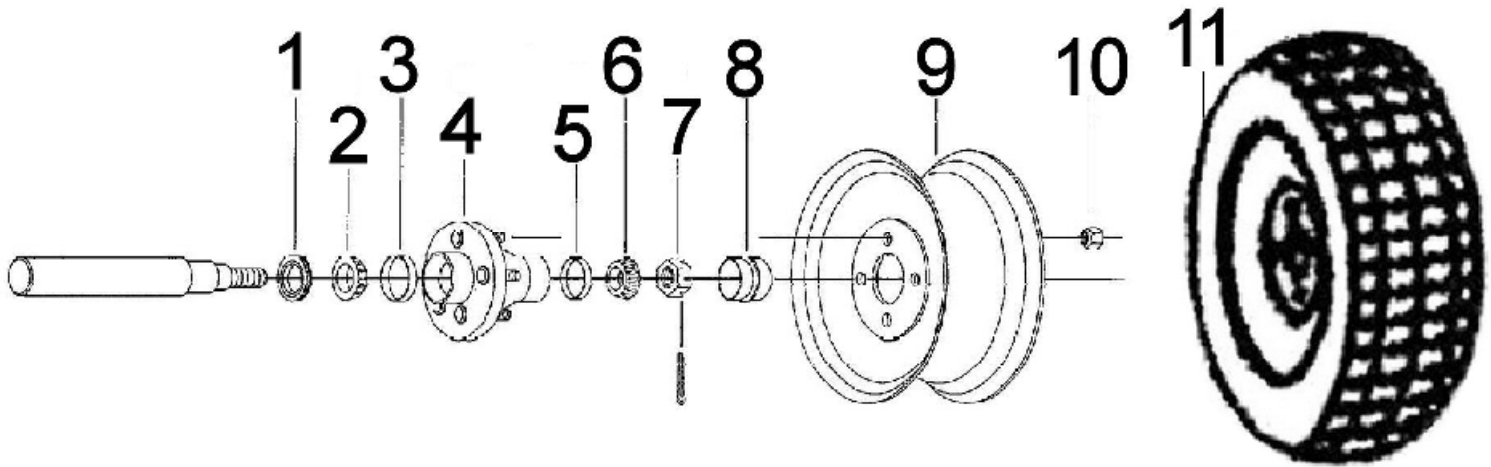




## 4000 - 1.5T TRAILER MAIN FRAME COMPONENTS

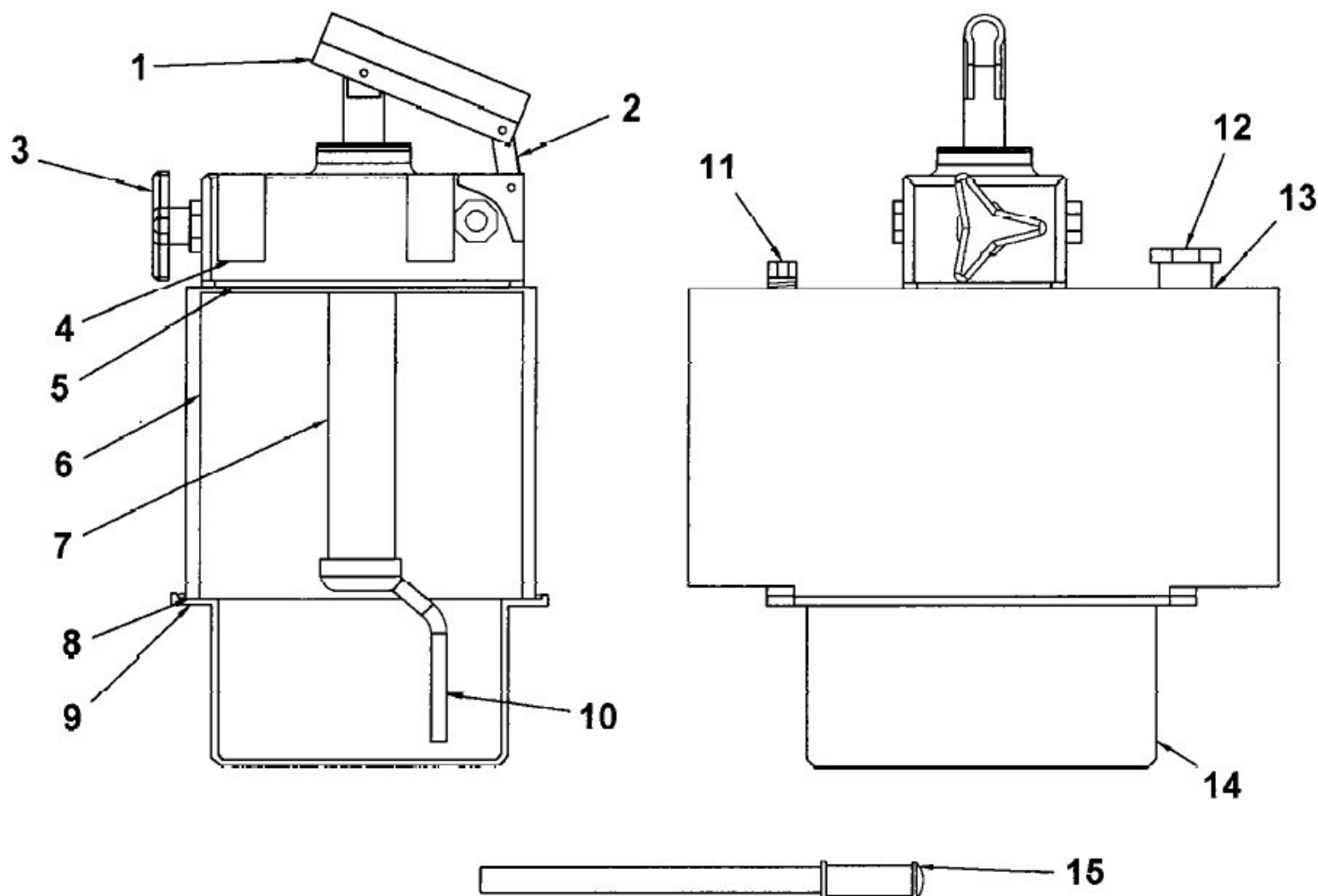
Ref. No.	Part Name	Part Number
1	Panel/Rear	930419
2	HHCS 3/8" X 3/4" - NC Gr. 5 Flat Washer 3/8"	303611 303969
	Rear Panel Latch	NA
	Panel/Left Side Box	NA
	Panel/Right Side Box	NA
	HHCS 3/8" X 2" - NC Gr. 5, Nut/Hex Locknut 3/8" NC	NA
	Panel Front Box	NA
	Floor Assembly	NA
3	HHCS 1/2" X 2-1/2" - NC Gr. 5 Nut/Hex Lock 1/2" - NC	303655 304020
4	Prop/Box	930427
5	Cylinder/Hydraulic 3" X 12"	930470
6	Hose/Hydraulic 102"	930466
7	Hitch/Swivel	930445
8	Bushing/Swivel	930567
9	Jack 10"	808009
10	Frame/Trailer Main	930400
11	Pin/Cotter 5/32" x 3"	930548
12	Pin/King	930437
13	Frame/Tandem Pivot	930434
14	Hub / Wheel Assembly	Next Page
15	Tire / Wheel Assembly	Next Page
16	HHCS 3/4" x 3-1/2" NC - Gr. 5 Nut/Hex Lock 3/4" - NC	303704 304022
17	Link/Quick 3/16" Chain	930444
18	Manual Hydraulic Pump	930475
19	Lever/Handle Manual Pump	930544
20	Pump Reservoir	930543
21	2" Ball Hitch Pkg. (Hitch, Bolt, Bushing)	405473

# 1-1/2 TON WHEEL COMPONENTS



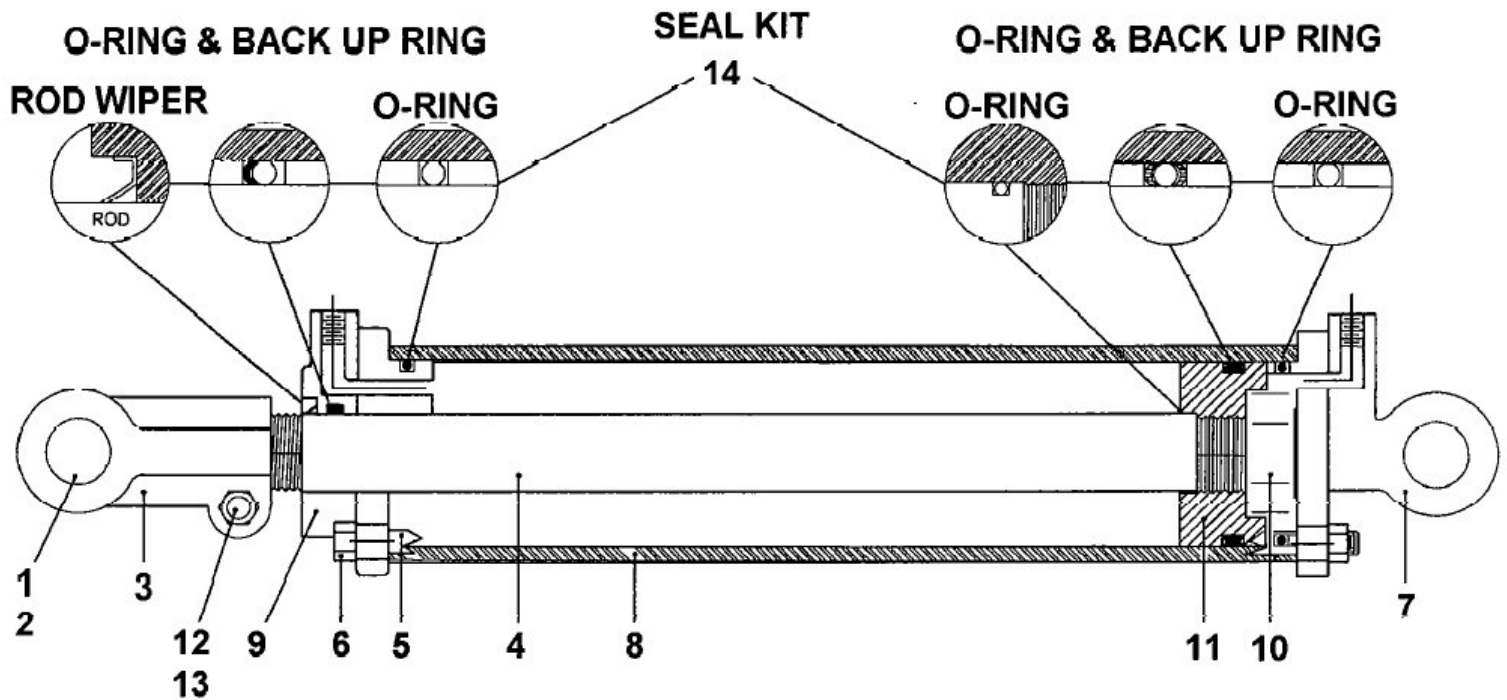
Item	Part Number	Description	Qty.
1	930460	SEAL / TRIPLE LIP	1
2	814684	CONE / BEARING L44643	1
3	505282	CUP / BEARING L44610	1
4	930452	HUB / WHEEL 4 - BOLT	1
5	505282	CUP / BEARING L44610	1
6	814684	CONE / BEARING L44643	1
7	930561	NUT / HEX SLOTTED 1.0"	1
	930562	PIN / COTTER	1
8	930455	CAP / HUB	1
9**	———	RIM / WHEEL 8.5 X 8 - 4 BOLT	1
**	———	TIRE 8.5 X 8 TURF SAVER	1
10	508430	NUT / LUG 1/2" - UNF	4
11	930442	RIM & TIRE / 8.5 X 8 TURF SAVER 4 - BOLT	——
		<b>RIM &amp; TIRE NOT AVAILABLE SEPERATELY</b>	

# MANUAL HYDRAULIC PUMP FOR 1-1/2 TON TRAILER



Item	Part Number	Description	Qty.
1	—	NOT SERVICED	—
2	—	NOT SERVICED	—
3	930533	RELIEF VALVE KNOB	1
4	305204	HHCS M8 X 25	4
5	930534	GASKET / PUMP	1
6	930535	PUMP MAIN BODY	1
7	930536	HAND PUMP ONLY (No Body)	1
8	930537	GASKET / RESERVOIR	1
9	930538	SCREW for Reservoir Mounting	8
10	930539	SUCTION TUBE for Reservoir	1
11	930540	PLUG / OIL FILLER	1
12	930541	CAP / BREATHER	1
13	930542	WASHER / ALUMINUM	1
14	930543	RESERVOIR / 3 LITER	1
15	930544	LEVER / HANDLE	1
***	930545	KIT / GASKET	
	930475	PUMP / MANUAL HYDRAULIC	

## 3" X 12" CYLINDER FOR 1-1/2 TON TRAILER



Item	Part Number	Description	Qty.
1	304244	CLIP / HAIR PIN	4
2	606949	PIN / CLEVIS	2
3	930476	CLEVIS ASSEMBLY for 3" X 12"	1
4	930477	ROD	4
5	930478	TIE ROD 3" X 12"	8
6	930479	NUT / TIE ROD	1
7	930480	BASE END	1
8	930481	TUBE BARREL 3" X 12"	1
9	930482	GLAND (CAP) ROD END	1
10	930483	NUT / PISTON	1
11	930484	PISTON	1
12	930485	NUT / CLEVIS	1
13	930486	BOLT / CLEVIS	1
14	930487	PACKING KIT for 3" X 12" CYLINDER	1
	930470	CYLINDER COMPLETE 3" X 12"	

